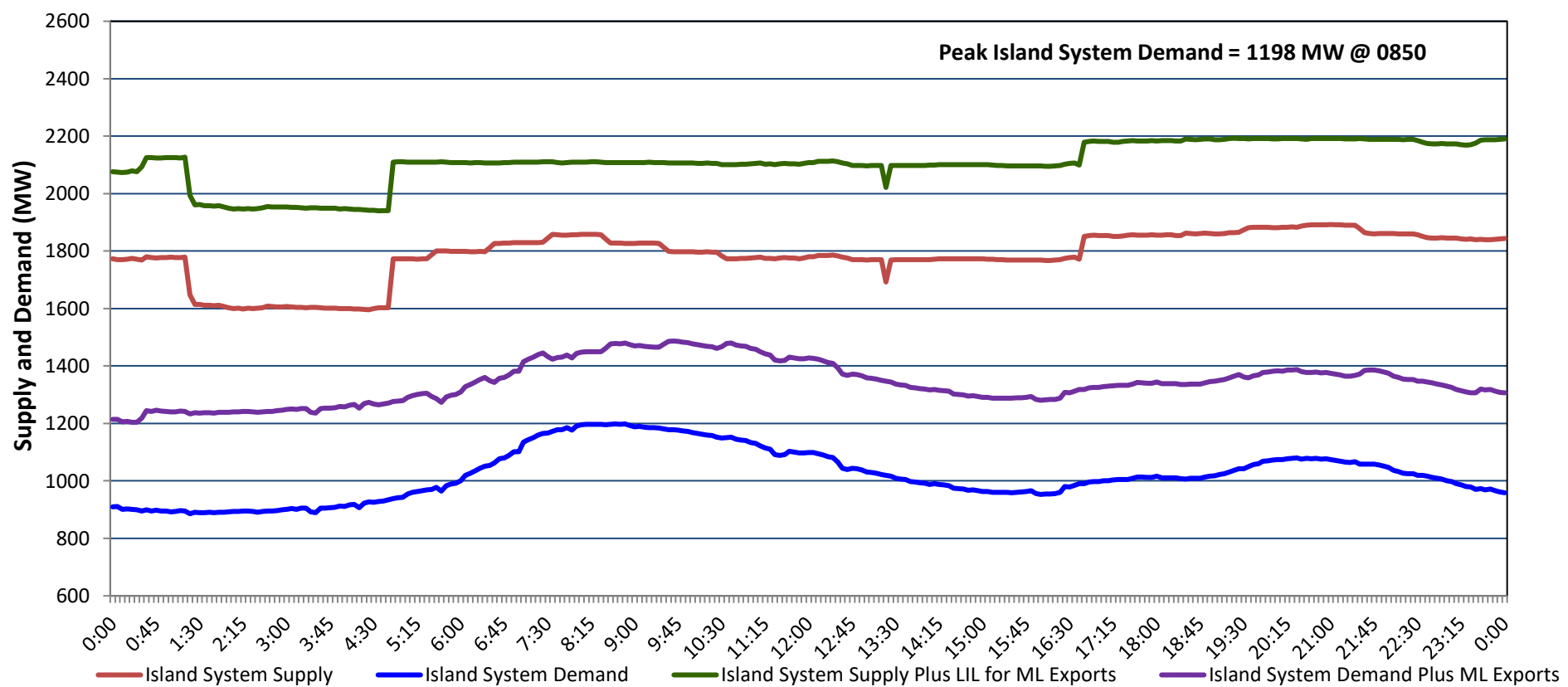


# Newfoundland Labrador Hydro (NLH) Supply and Demand Status Report Filed Thursday, March 27, 2025

## Section 1 Island Interconnected System - Supply, Demand & Exports Actual 24 Hour System Performance For Wednesday, March 26, 2025



### Island Supply Notes For March 26, 2025

- A As of 0952 hours, March 11, 2025, Granite Canal Unit available at 32 MW due to forced derating (40 MW).
- B As of 0902 hours, March 20, 2025, Holyrood Unit 3 available but not operating 130 MW (150 MW).
- C As of 1440 hours, March 23, 2025, Paradise River Unit unavailable due to planned outage (8 MW).
- D At 0119 hours, March 26, 2025, Holyrood Unit 1 unavailable due to forced outage (170 MW).
- E At 0445 hours, March 26, 2025, Holyrood Unit 1 available (170 MW).
- F At 0816 hours, March 26, 2025, St. Anthony Diesel Plant available at 8.85 MW due to forced derating (9.7 MW).
- G At 1318 hours, March 26, 2025, Bay d'Espoir Unit 5 unavailable due to planned outage (76.5 MW).
- H At 1324 hours, March 26, 2025, Bay d'Espoir Unit 5 available (76.5 MW).
- I At 1643 hours, March 26, 2025, Bay d'Espoir Unit 6 available (76.5 MW).

## Section 2 Island Interconnected System - Supply, Demand & Outlook

Thu, Mar 27, 2025	Island System Outlook <sup>2</sup>	Seven-Day Forecast	Island System Daily Peak Demand (MW)	
			Forecast <sup>8</sup>	Adjusted <sup>6</sup>
Island System Supply: <sup>4</sup>	2,000 MW	Thursday, March 27, 2025	1,245	1,141
NLH Island Generation: <sup>3,7</sup>	1,525 MW	Friday, March 28, 2025	1,225	1,121
NLH Island Power Purchases: <sup>5</sup>	105 MW	Saturday, March 29, 2025	1,180	1,076
NP and CBPP Owned Generation:	220 MW	Sunday, March 30, 2025	1,210	1,106
LIL/ML Net Imports to Island: <sup>9</sup>	150 MW	Monday, March 31, 2025	1,265	1,160
		Tuesday, April 1, 2025	1,190	1,086
7-Day Island Peak Demand Forecast:	1,335 MW	Wednesday, April 2, 2025	1,335	1,230

### Island Supply Notes For March 27, 2025

- Notes:
1. Generation outages for running and corrective maintenance are included. These are not unusual for power system operations. They generally do not impact customer supply. Hydro schedules outages to system equipment whenever possible to coincide with periods when customer demands are low and sufficient supply reserves are available. However, from time to time equipment outages are necessary and reserves may be impacted.
  2. As of 0800 Hours.
  3. Gross continuous unit output.
  4. Gross output from all Island sources (including Note 3).
  5. NLH Island Power Purchases include: ML Imports, Exploits Generation, Rattle Brook, Star Lake, Wind Generation and capacity assistance (when applicable).
  6. Adjusted for interruptible load and the impact of voltage reduction when applicable.
  7. Due to limitations inherent in the design of combustion turbines, the output of combustion turbines may be reduced in the event that ambient temperatures exceed the threshold required for full rated output. This threshold is dependent on the design of each turbine.
  8. Does not include ML Exports.
  9. LIL Import sunk in the Island System. Actual LIL flows will be restricted by various system conditions including, but not limited to, Island Load, ML Exports and Avalon Unit status.

## Section 3 Island Peak Demand and Exports Information Previous Day Actual Peak and Current Day Forecast Peak

Wed, Mar 26, 2025	Island Peak Demand <sup>10</sup>	8:50	1,198 MW
	Exports at Peak		281 MW
	LIL Net Imports to Island		886 MWh
Thu, Mar 27, 2025	Forecast Island Peak Demand		1,245 MW

- Notes: 10. Island Demand is supplied by NLH generation and purchases, LIL Imports plus generation owned and operated by Newfoundland Power and Corner Brook Pulp & Paper (Deer Lake Power, DLP).